



logisticsplus.com



# FURNITURE, FIXTURES, & EQUIPMENT

## LOGISTICS PLUS FF&E DIVISION

Logistics Plus serves clients seeking a full-service global solution for their Furniture, Fixtures, and Equipment (FF&E) projects in the hospitality, retail, co-working, co-living, healthcare, education, trade show, and real estate development industries.

CREATE YOUR SUCCESS STORY

 LOGISTICS+  
PASSION FOR EXCELLENCE

Total Logistics Management: It's what we do!







# OUR VALUES



Serving thousands of clients annually, we construct logistics and supply chain partnerships that are nimble, flexible, capable, accurate and consistently deliver success. We live by our motto “Passion for Excellence”. Beginning with LP’s founder and leadership, our team is guided by a few principles which, while limited in number, form the core of our corporate character. **It’s in our DNA:**

**ASSUME NOTHING.** *Don't assume what you thought or what you were told is going to happen. CHECK. Follow Through. Make sure. Don't drop the ball. Don't assume.*

**WE CARE.** *This matters. It matters to our customer, and to their customers and to us. If you don't care about what you are doing, the customer will feel that, and it won't work. If you don't care about our customer succeeding, you should do something else for a living.*

**COMMUNICATION IS KEY.** *Self-explanatory. OVER-communicate. Don't be the one people are "waiting on" so they can do their job. Let folks know what is happening. Communication is SO easy in this day and age. COMMUNICATE!!!*

**NO SURPRISES.** *Don't let our customer get surprised or worse tell you that we messed up somewhere. Let the customer know if there are problems, so they have time to react. Take responsibility and make that tough call. Better than dealing with the fallout of letting the customer get blindsided.*

**ONE TEAM.** *The vendors, partners and people we've chosen to help us in supporting our customers are LP. They are not "other"; they are us. Treat them as such. If they fail, we have failed. We need to help THEM succeed, so our customer/project succeeds. Only when that happens, does LP succeed.*

**BE NICE.** *No reason to not be nice. Very few rules here, but the golden rule always applies: "Treat others as you'd like to be treated yourself". Simple. You learned that in grade school. You can kick butt when you need to kick butt, but do it without anger and with respect. No need to ever belittle anyone. Don't ever humiliate. Teach. Coach. Improve.*

**FIND A WAY OR MAKE ONE.** *Our CEO's first "Thought for Today" 25 years ago. FIND an answer. Don't quit until you do. Be smart. Be creative. Find a way to "YES!"*

**ELBOW GREASE.** *As Einstein said, "1% inspiration, 99% perspiration". Not always fancy. Just effort. Effort works.*

**WORK SMART.** *"Busy" is one thing but not THE thing. A hamster on a wheel is busy. Work smart. Find better ways. Speak up. Don't just look busy, hustle and be effective.*

We believe in what we do and how we do it. It is what makes us different. We stand out, differentiating ourselves from the competition through our people and our actions. Many companies state this, but we walk the talk every day. We are a flat organization with no bureaucracy where everyone is responsible and accountable to act like owners and make the difference for our customers.

**No red tape or bureaucracy, just action and results.**



# COMPANY **TIMELINE** (EARLY YEARS)



1996

## **LEADING LOGISTICS**

Logistics Plus founded to manage domestic freight and project cargo for GE Transportation.



2011

## **HORIZON LOGISTICS**

Logistics Plus acquires Horizon Logistics adding additional freight forwarding talent and customers to the company.



1999

## **GOING GLOBAL**

Logistics Plus expands to India, China, and Indonesia and begins serving other industrial customers.





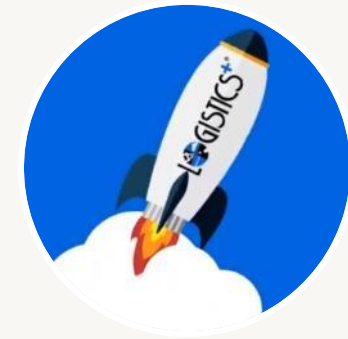
# COMPANY **TIMELINE** (MORE RECENTLY)



2015

## **FURNITURE, FIXTURES & EQUIPMENT**

Logistics Plus selected by large multinational co-working brand to oversee its entire global supply chain, establishing the company as a major player in the FF&E logistics industry.



2014

## **GROWING THE BRAND**

Logistics Plus launches new website, company branding and marketing support programs.



Today

## **UPWARD & ONWARD!**

Logistics Plus continues record-growth with contemporary companies such as Amazon, Google, Rivian and many others.



# WE HAVE LOCATIONS AROUND THE WORLD



 We have nearly 1,000 employees located in 30+ countries worldwide



 Logistics Plus Office



# THE LOGISTICS PLUS NETWORK



## NORTH AMERICAN



Warehousing & Fulfillment Solutions



## INTERNATIONAL



## 4PL SOLUTIONS



4PL and Dedicated Logistics Programs



## COVERING YOUR SUPPLY CHAIN

We are **LARGE** and **COMPREHENSIVE** enough to satisfy any link in your North American or Global supply chain ...

But we are still **FLAT**, **NIMBLE** and **RESPONSIVE** to your specific logistics challenges.

We call this the “Goldilocks Zone.”



# PROVEN SOLUTIONS FOR CLIENTS

As the global supply chain manager for many brands, Logistics Plus coordinates procurement logistics, warehouses and delivers thousands of items for its client's sites around the world daily.

Millions of FF&E/OS&E units were installed over the past five years with a claim-free ratio of 99.5% which includes shipping, warehousing, transportation, white glove delivery and installation!





# END-TO-END SUPPLY CHAIN VISIBILITY



## Shipping

- P.O.
- ASN to Warehouse
- Milestone activity
- ETD Port of Origin
- Confirmed on Board/Shipped
- In-Transit
- ETA
- Actual Arrival Confirmation
- Customs Clearance
- All Documents in e-Docs format



## Hub Warehouse

- Scan Receipt against ASN
- Inspection/Quality Check
- SKU, BoM, Pictures
- WHSE-Level "Shopping" for inventory
- Bulk, Project Freight visibility
- Allocating to Project
- Shipment Order Generation
- ASN to Staging WHSE



## Staging Warehouse

- Transfer to WHSE (as applicable)
- Scan bar code against ASN using Mobile App
- Allocating Goods to Project Site; in required sequence/quantities
- Shipment Order Generation
- ASN to Project Site



## Project Site

- Transfer to Project Site
- Scan into site ASN using Mobile App
- Inventory Mgmt per project
- Onsite receiving
- ASN created for returns to HUB; post-project inventory reconciliation



✓ REAL TIME VISIBILITY TO INVENTORY TRANSACTIONS



✓ SKU LEVEL INVENTORY IMAGE CAPTURE & DISPLAY



✓ ASSET LEVEL TRACKING CAPABLE

✓ MIN/MAX REPLENISHMENT TRIGGERS

✓ BARCODING & SERIALIZATION

✓ ANY-TO-ANY INTEGRATION CAPABILITY



✓ SKU LEVEL VALUATION IN INVENTORY

✓ SLOW MOVING SKU REPORTING



✓ "e-DOC" DOCUMENT UPLOAD AND VISIBILITY

✓ COMPLETE SUITE OF REPORTING AND ANALYTICS

## FROM PO TO INSTALL, WE DO IT ALL FOR YOU™





# FULL SERVICE FF&E AND OS&E LOGISTICS SOLUTIONS



## Freight Management

- Flexible Freight Services
- Dedicated Coordination
- Ocean, Air, Rail & Truck
- Transportation solutions that meet your needs



## Full-Service Installation Management

- 4PL & Supply Chain Consulting
- Dedicated On-Site Resources
- Industry-Specific Solutions
- Project Management
- Professional, Full-Service Installation Management



## International Freight Forwarding

- Import & Export Services
- Air Freight Forwarding
- Ocean Freight Forwarding (FCL & LCL)
- Customs Clearance & Trade Compliance



## Technology Solutions

- Web services and EDI integrations
- PO / Order / Inventory Management
- eShipPlus™ Trans. Mgt. System (TMS)
- eWorldPlus™ Cargo Management Tools
- MyLogisticsPlus™ Reporting & Dashboards
- Warehouse Management System (WMS)



## Warehousing & Fulfillment

- Inbound & Outbound Turnkey & Customized Process
- Clean, Secured Facilities
- Pick, Pack, Kitting, Ship
- Order Entry & Reporting
- “Room in a Box”





# WE PROVIDE WORLD-CLASS TECHNOLOGY



## mylogisticsplus™

MyLogisticsPlus™ (My.LP) is our custom-built portal, personalized to meet our clients' specific visualization, reporting, and usability requirements, and provide extended functionality (via Desktop PC and Mobile App).

### CargoWise One

Our integrated global logistics and back office platform for freight forwarding, tracking, customs clearance, warehousing (WMS), accounting, and more.



Business Intelligence (BI) and analytics powered by Qlik® - an 8-year Gartner Magic Quadrant platform.

### eworldplus™

Our client-facing web portal that's integrated with CargoWise One to provide real-time global shipment quoting, cargo tracking, warehousing, and more.



Custom-built mobile warehousing and transportation app for iPhone and Android.

### eshipplus™

Our proprietary North American transportation management system (TMS) designed to be extremely flexible and user-friendly for quoting, tracking, booking, and more.



Seamlessly integrated eCommerce pick, pack and ship fulfillment capabilities, powered by VeraCore®.

### FF&Eplus™

Customized, turnkey management system for the Furniture, Fixtures & Equipment industry.

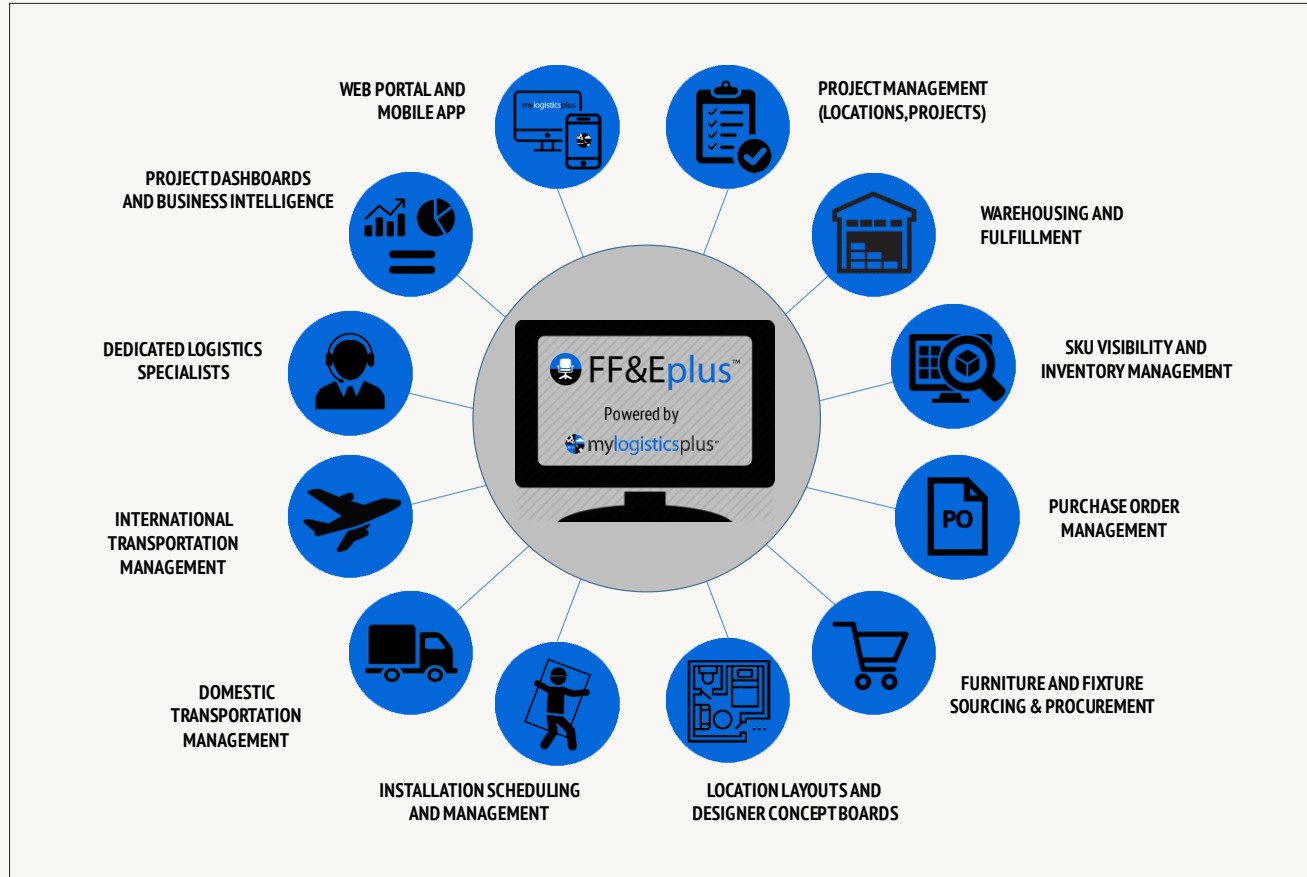




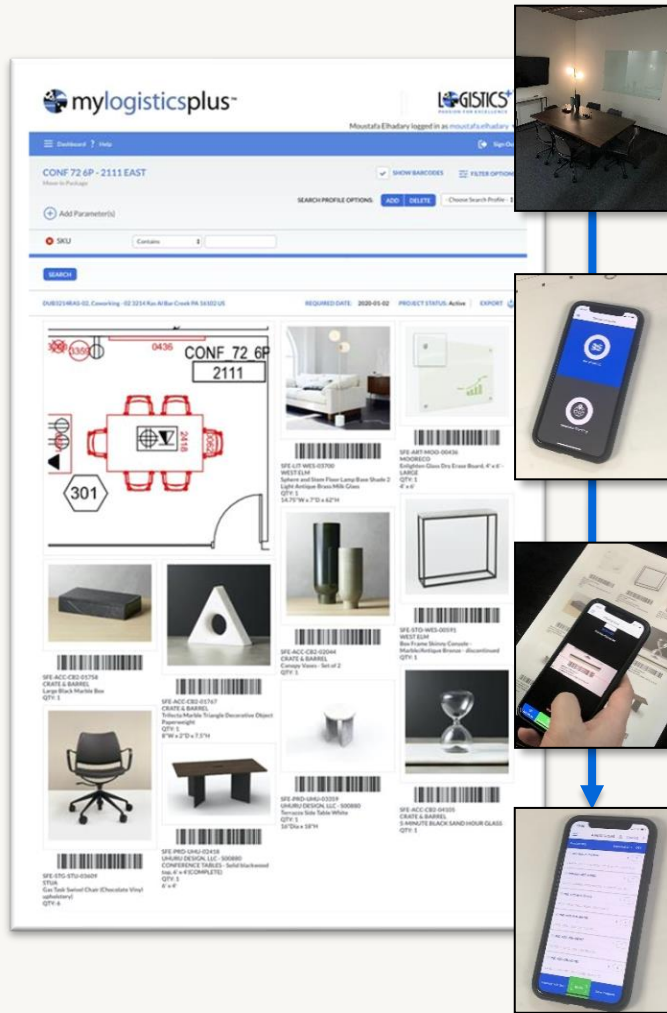
# WE HAVE A TURNKEY, CUSTOMIZABLE FF&E PLATFORM



Our Furniture, Fixtures & Equipment platform is **FF&Eplus™**

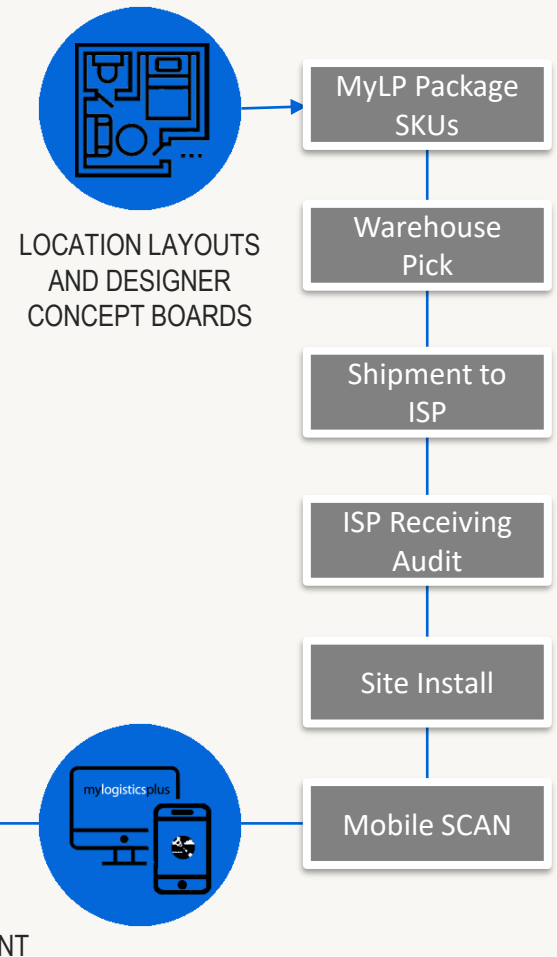


# THE LOGISTICS PLUS MOBILE SCANNING APP



Inventory integrity is verified by using the app to scan product on site. Scanned inventory is then audited against what was ordered in My.LP packages. Final scans create an accurate inventory list on the ASN.

- Capture 100% product budget cost
- Creates inventory on ASN per project
- Accurate audit of planned vs installed
- Eliminates manual entry errors
- Available on Android and Apple products







# Solutions in Action:

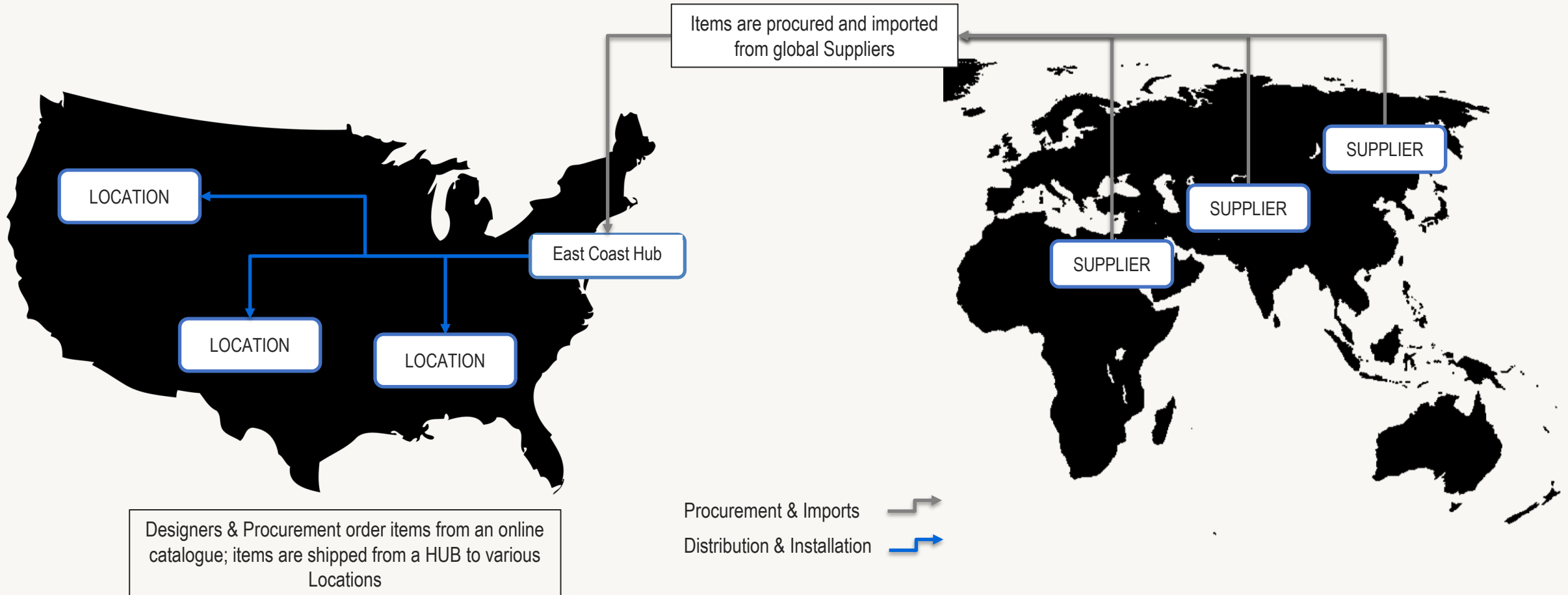
**Logistics Plus manages the complete, global supply chain for industry-leading companies**



# SOLUTION IN ACTION: FURNITURE, FIXTURES, & EQUIPMENT



Managing end-to-end supply chain for global hospitality, co-working, co-living, education and office space providers







# SOLUTION IN ACTION: FURNITURE, FIXTURES, & EQUIPMENT

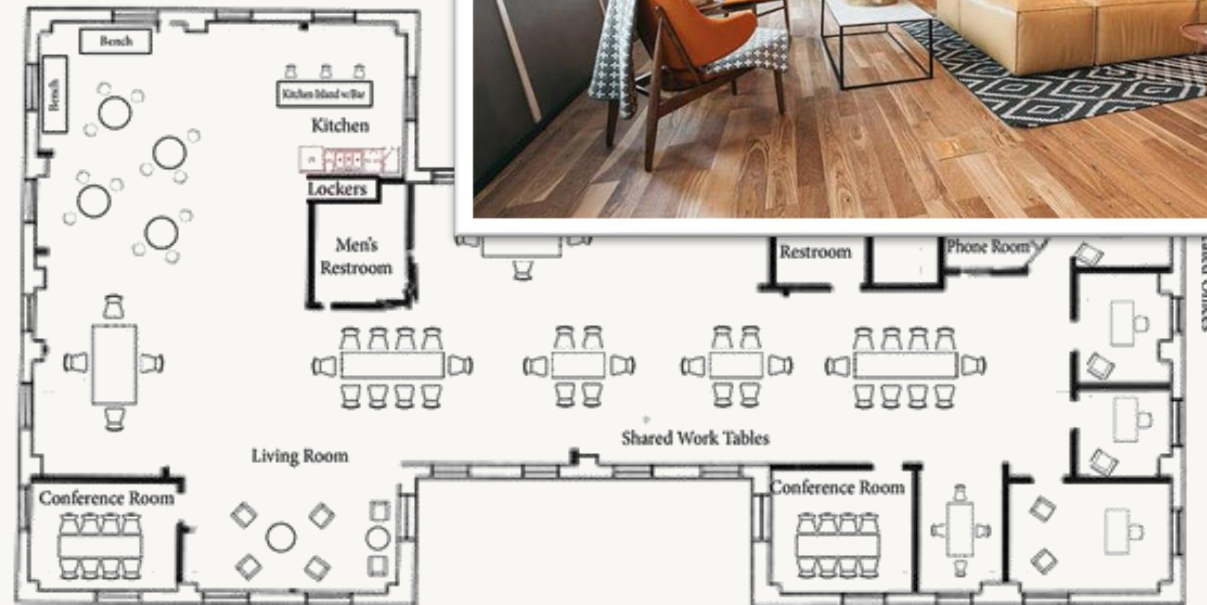
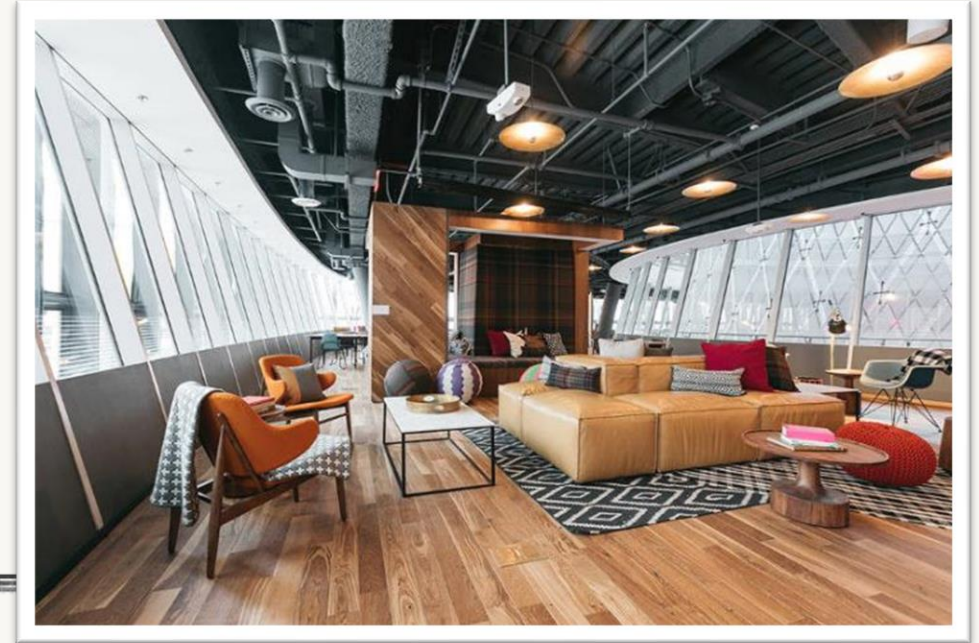


## Context

- Client provides co-living space at various Locations (regions) around the world
- Each Location is treated as a separate business unit from the main corporate entity
- For any given location, there could be multiple projects (new job-sites) going on at the same time
- Each project is run by a designer, who is responsible for creating floor plans, ordering materials and overseeing installations
- Client is undergoing massive growth

## Problem

1. Client does not have procurement, order management or inventory management capabilities – and requires those turn-key to keep up with growth demands
2. Client needs to keep track of inventory across the network, and record an inter-company transaction between business units when inventory moves from a hub to a location

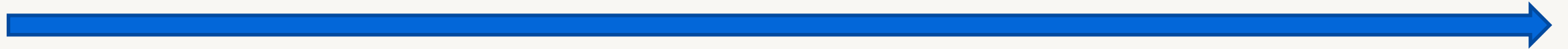




# SOLUTION IN ACTION: FURNITURE, FIXTURES, & EQUIPMENT



Problem #1 Solution: LP's Turn-Key supply chain solution provides a platform for efficient scale and growth globally



## PROCURE



Dedicated Ops Team receives PO from Client and purchases inventory on their behalf

## TRANSPORT



International Team arranges pickup and handles international transport based on service needs (ocean or air)

## IMPORT



Customs Brokerage Team clears customs and facilitates payment of duties – all records maintained digitally

## RECEIVE



Warehouse operations team receives inventory and populates the WMS



# SOLUTION IN ACTION: FURNITURE, FIXTURES, & EQUIPMENT



Problem #2 Solution: **FF&Eplus™** ensures supply chain visibility by providing a customized online product catalogue with inventory management, order entry workflow process, and asset trackability between warehouses and project locations.



## BROWSE & ORDER

## DELIVER & INSTALL

FLOOR PLAN IMAGE (MAX: 750PX BY 400PX)  
No file selected Choose File CLEAR IMAGE

Download Import Template

IMPORT SKUS EXPORT SKUS ADD SKU CLEAR SKUS

SKU Image	SKU	SKU Description	Category	Quantity	Shipping Cost	Taxes and Duties	VAT	Action
	IND-RUG-LID	Lubo Rug - Custom	ACCESSORIES	1	0.00	0.00	0.00	✖
	IND-RUG-RPD	Anchor Grip 30, Felt & Reinforced Rubber Rug Pad - 6' x 8'	ACCESSORIES	1	0.00	0.00	0.00	✖
	IND-STG-STU	Gas Task Swivel Chair	FURNITURE	6	0.00	0.00	0.00	✖
	IND-STG-STU	Gas Task Swivel Chair	FURNITURE	4	0.00	0.00	0.00	✖
	IND-PRD-RYP	Huddle Table - Single Arrowhead, Walnut Stain Wood, 6' x 4'	FURNITURE	1	0.00	0.00	0.00	✖

SAVE CANCEL

Update Install Package

PROJECT CODE  
ProjectCode22 My first project2

PACKAGE STATUS  
Initiated

PACKAGE NAME  
Oew

ACTUAL COST 0.00 ESTIMATED COST 0.00

DESCRIPTION (16 OF 1000 CHAR.)  
description here

FLOOR PLAN IMAGE (MAX: 750PX BY 400PX)  
No file selected Choose File CLEAR IMAGE

Download Import Template

IMPORT SKUS EXPORT SKUS ADD SKU CLEAR SKUS

SKU Image	SKU	SKU Description	Category	Quantity	Shipping Cost	Taxes and Duties	VAT	Action

SAVE CANCEL

Designers search through thousands of SKUs stocked at the domestic Hubs – customized product catalogue includes photos & specs

Items are ordered straight from the app and are automatically assigned to their Designer, Location, Project and Package

Warehouse team picks, packs and ships the items ordered (break-pack and bulk fulfillment)

Local job-site personnel scan- receive the ordered items via mobile app and complete installation according to spec



# REASONS WHY YOU NEED LOGISTICS PLUS!



- 🌐 We manage your logistics so you can focus on your core business.
- 🌐 Our teams can integrate with your company in a variety of ways, from full-time onsite resources to offsite logistics management of multiple locations.
- 🌐 We manage inbound and outbound, domestic and international freight.
- 🌐 We connect all the links in your supply chain, from vendor to end customer.
- 🌐 Our teams listen, then design customized and comprehensive supply chain solutions for our clients. Our world-renowned technology suite and customer portal can be operated independently, or can be seamlessly integrated with virtually any ERP, providing data and analytics that drive efficiency and savings.
- 🌐 We provide outstanding value-added FF&E logistics and supply chain services through cost-effective operational planning, efficient execution, unparalleled visibility, and exceptional project management.
- 🌐 Using our unique and efficient supply chain process, LP has successfully managed hundreds of thousands of client SKUs for goods valued in excess of \$100 million – delivering on time, every time. We have served our clients in 25+ countries and 100's of cities from 100+ warehouses opening thousands of spaces and supported renovations and post-move services globally.







# THANK YOU!

[logisticsplus.com/testimonials](https://logisticsplus.com/testimonials)

[ffe@logisticsplus.com](mailto:ffe@logisticsplus.com)

Email us today to learn more!

