



logisticsplus.com



TECHNOLOGY & BUSINESS INTELLIGENCE

LOGISTICS PLUS INC.

Logistics Plus® offers practical, world-class, and user-friendly technology and business intelligence solutions for transportation management, freight forwarding, warehousing management, eCommerce fulfillment, and supply chain management.

ABOUT LOGISTICS PLUS



WE'RE EXPERIENCED AND WELL RECOGNIZED

- Founded in 1996 by Jim Berlin to be a lead logistics provider for GE Transportation
- \$500M+ privately held company headquartered in Erie, PA (USA)
- Many awards for entrepreneurship, growth, and service excellence





WE HAVE LOCATIONS **AROUND THE WORLD**



 We have 1,000 employees located in 30+ countries worldwide





THE LOGISTICS PLUS NETWORK



NORTH AMERICAN

LOGISTICS+
North American
Transportation



Warehousing &
Fulfillment Solutions

NTL
National Truckload
Dedicated Fleet

INTERNATIONAL

LOGISTICS+
International
Freight Forwarding

LOGISTICS+
Project Cargo &
Global Operations

LOGISTICS+
Custom Broker Solutions

LOGISTICS+
LINGUISTIC SOLUTIONS
Global Linguistics

4PL SOLUTIONS

LOGISTICS+
Supply Chain Solutions

4PL and Dedicated
Logistics Programs



COVERING YOUR SUPPLY CHAIN

We are **LARGE** and **COMPREHENSIVE** enough to satisfy any link in your North American or Global supply chain ...

But we are still **FLAT**, **NIMBLE** and **RESPONSIVE** to your specific logistics challenges.



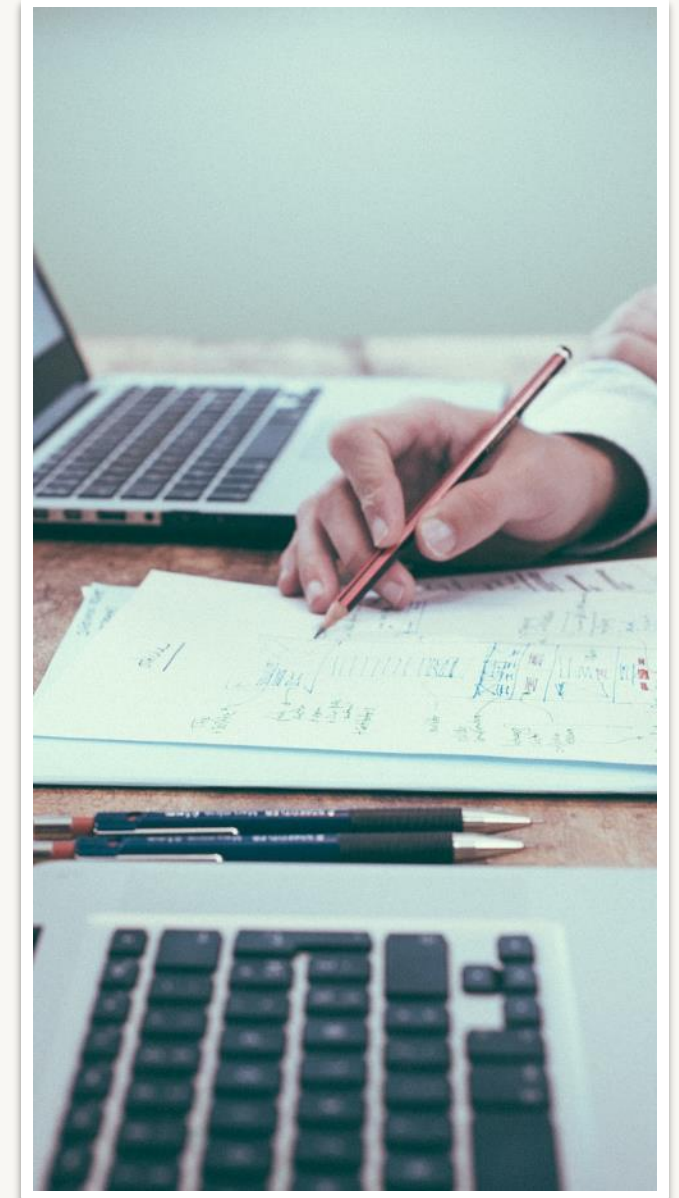
IT & BI SOLUTIONS

TECHNOLOGY

Our team of development and information technology experts integrate best-in-class and custom-built platforms to provide an overall ecosystem that can be seamlessly integrated into global supply chains.

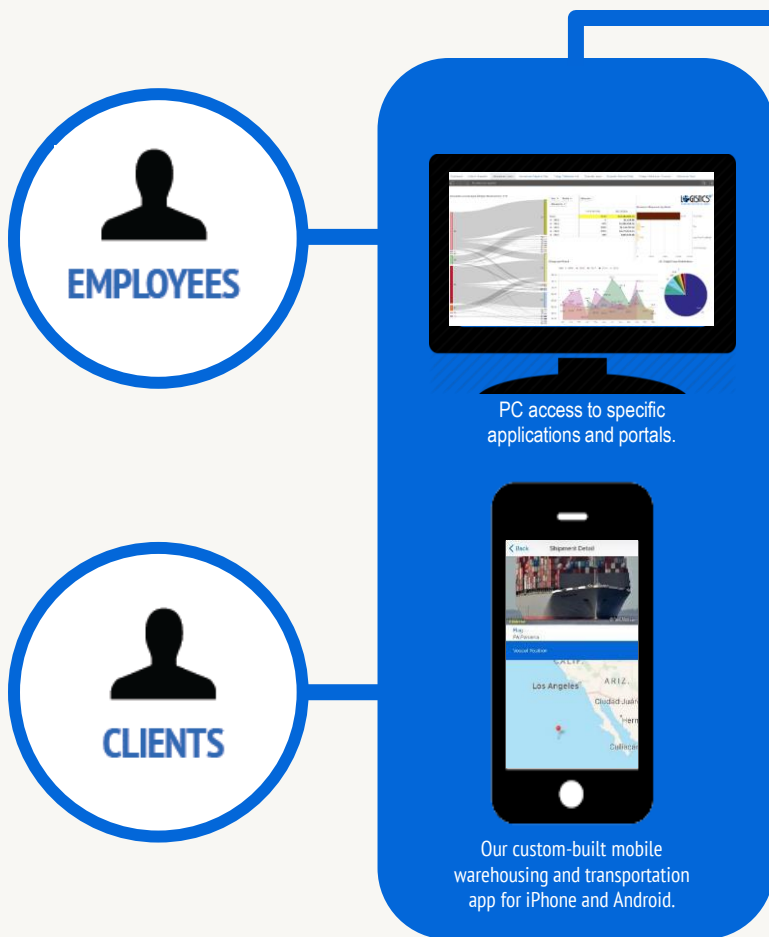
BUSINESS INTELLIGENCE

We provide our clients with end-to-end supply chain visibility using interactive dashboards, predictive analytics, custom reporting, shipment tracking and tracing, and global control tower capabilities.





WE PROVIDE WORLD-CLASS TECHNOLOGY



MyLogisticsPlus™ is our custom-built portal, personalized to meet our clients' specific integration, data processing, process flow, visualization, analytics and reporting requirements.

CargoWise One

Our integrated global logistics and back office platform for freight forwarding, customs clearance, warehousing (WMS), and more.



Our CargoWise One-integrated client portal for real-time global shipment quoting, cargo tracking, warehousing, and more.



Our proprietary North American transportation management system (TMS) designed to be extremely flexible and user-friendly for quoting, tracking, booking, and more.



Our integrated global multi-carrier omni-channel high-speed shipping platform for e-commerce, drop shipping, fulfillment and more.



Qlik is a 11-year Gartner Magic Quadrant Leader platform that powers our business intelligence (BI) and analytics.



Our B2B data interchange solution for easy integration with EDI and non-EDI partners, ERP Systems and eCommerce platforms.



Our E-commerce Fulfillment Suite: OMS+WMS, robust API connectivity and plug & play integration with all major shopping carts and marketplaces.



A fully customized, turnkey management system for Furniture, Fixtures & Equipment (FF&E) customers.



OUR TECHNOLOGY SUITE IS EFFICIENT



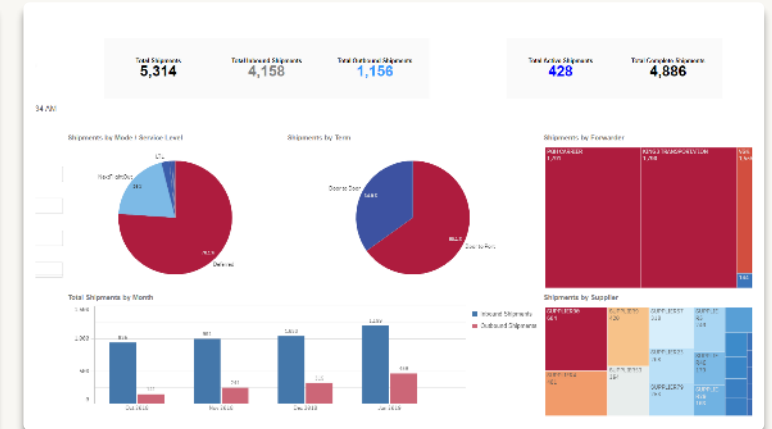
ESHIPPLUS™

Our North American Division (NAD) is powered by the eShipPlus™ Transportation Management System (TMS).



EWORLDPLUS™

Our eWorldPlus™ global technology is powered by CargoWise® One. This platform is used for freight forwarding and warehousing.

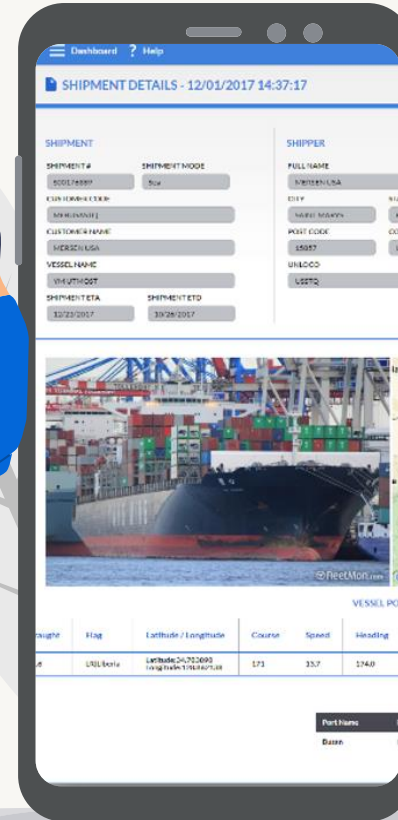


QLIK SENSE®

Powered by Qlik Sense, we create and manage interactive, customizable dashboards with a set of high level reports on key metrics.



WE PROVIDE CUSTOMIZED IT APPLICATIONS



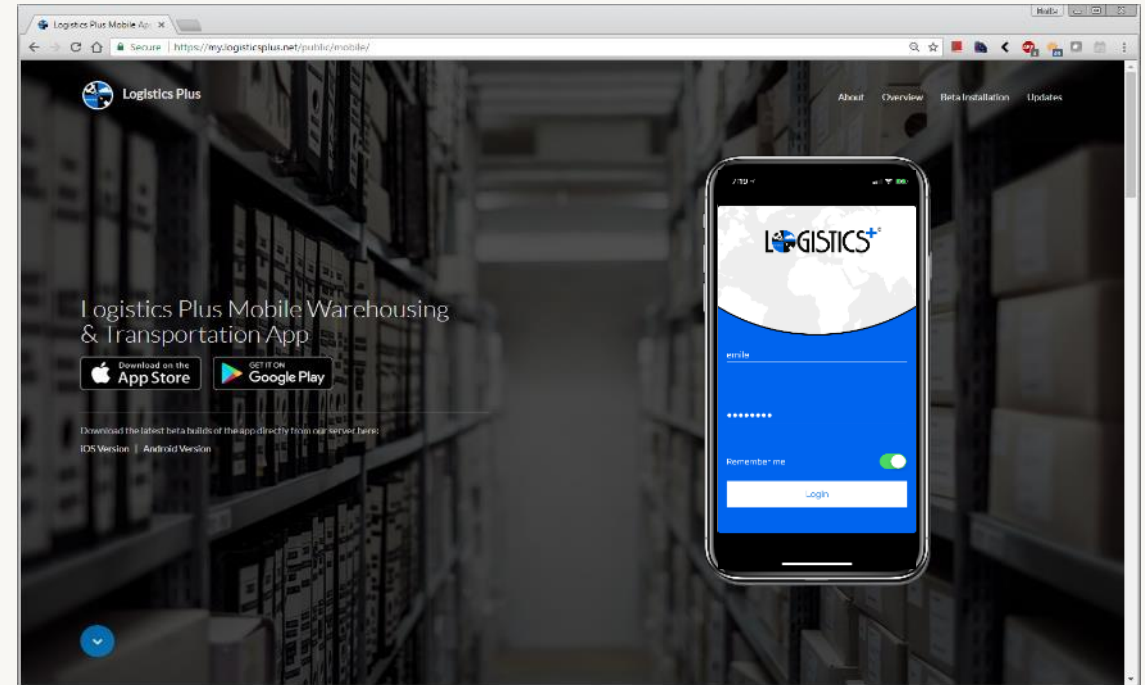
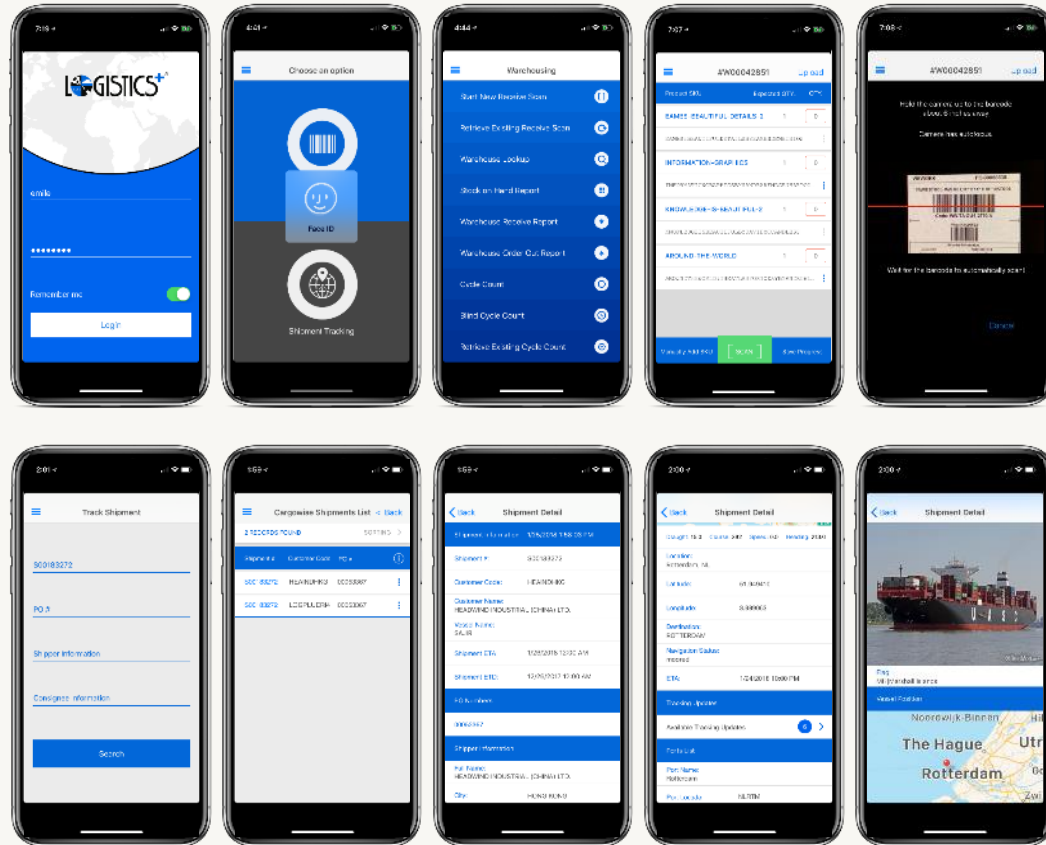
Mobile applications, tracking portals, data visualizations, and more!



OUR WAREHOUSING & TRANSPORTATION APP



Available on iPhone and Android platforms



Inventory Management and Detailed Shipment Tracking Applications



BUSINESS INTELLIGENCE SOLUTIONS



END TO END SUPPLY CHAIN VISIBILITY

Logistics Plus® offers a full suite of user-friendly BI tools that are reflective of specific customer requirements.



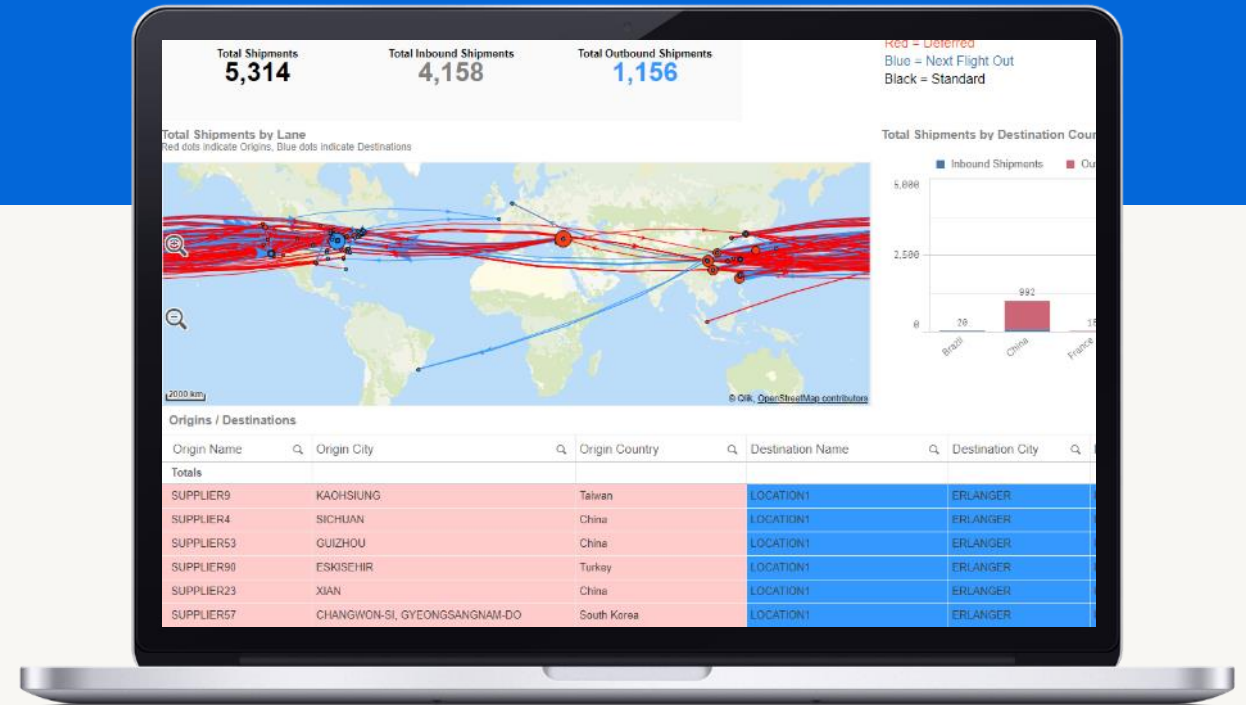
Our custom **analytic solutions** cater to the exact specifications and requirements of our clients rather than having a standard “out of the box” solution.



By using **predictive analytics**, we help businesses budget and plan by utilizing existing data to forecast and anticipate future events.



Our **custom reporting** abilities begin with raw data and end with digestible, useful information to help our clients to find savings opportunities.



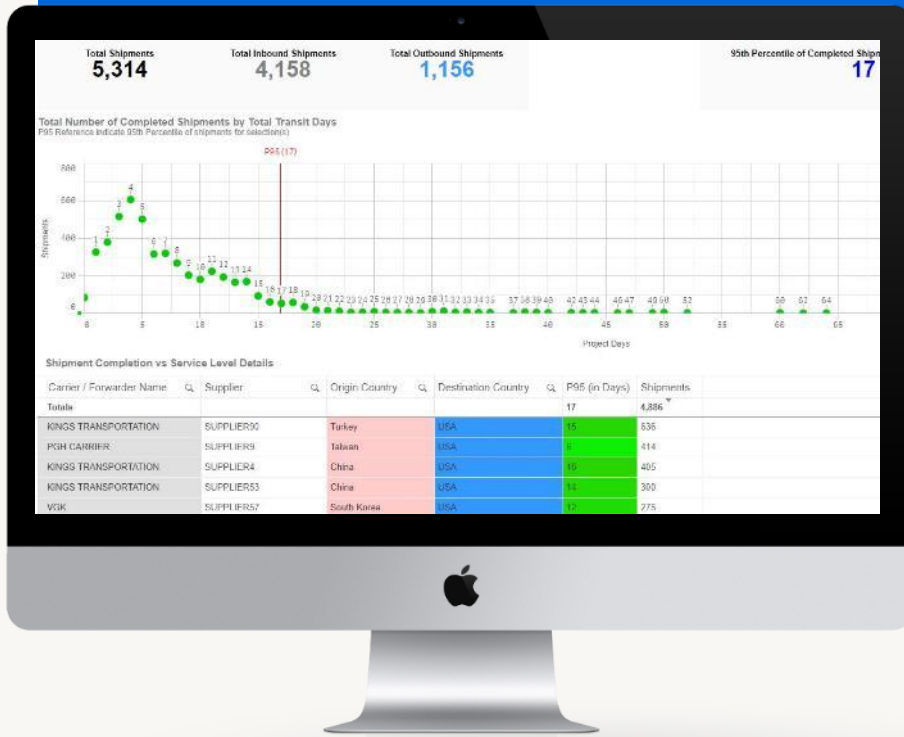


CONTROL TOWER CAPABILITIES



CAPTURING DATA POINTS ACROSS THE GLOBE

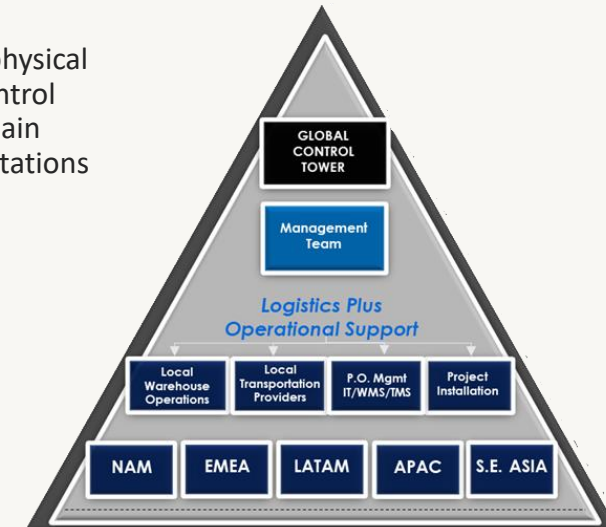
By tracking milestones and the progress of each shipment, we are able to identify specific pain points in a supply chain.



Logistics Plus captures data points regarding the physical movement of shipments across the globe. Our control tower capabilities find the root cause of supply chain disruptions so our clients can readjust their expectations or change their processes in a specific country.



By offering the flexibility of tracking one unique shipment, or analyzing multiple shipments on an aggregate level, our control tower capabilities allow our customers to gain a better perspective on all shipment activities.





EXPLORE OUR **TECHNOLOGY & BUSINESS INTELLIGENCE SOLUTIONS!**

Logistics Plus Inc. | 1406 Peach Street | Erie, Pennsylvania 16501 USA

Phone : **+1.866.LOG.PLUS** (+1.866.564.7587)

Email : **it.bi@logisticsplus.com**

Website: **logisticsplus.com**

 facebook.com/LogisticsPlus

 twitter.com/LogisticsPlus



THANK YOU!

logisticsplus.com/testimonials

